

Annual Report, Fiscal Year 2009

Washington County Transit – *County Commuter*

Mission Statement

Washington County Transit strives to provide safe, affordable, dependable and accessible public transportation that will enhance the mobility of our customers.

FY 2009 Highlights

Ridership continued to rise for the sixth consecutive year with an overall increase of seven (7) percent.

County Commuter secured funding to extend the Hopewell Express transit services to the end of Fiscal Year '09.

LSC Transportation Consultants, Inc. of Colorado Springs, Colorado began work on Washington County's Transportation Development Plan (TDP).

Washington County Transit was awarded \$ 2,271,913 in stimulus funds for capital projects from the American Recovery and Reinvestment Act (ARRA).

At the Transportation Association of Maryland's 20th Annual Conference Rosalind Martin of WCDSS received the Human Service Partnership (Individual) in recognition of her dedicated support and tireless work in the development of both the JOBS Shuttle and the Hopewell Express.

Overview

Washington County Transit (WCT) operates the *County Commuter* providing general public transportation in Washington County. WCT is under the County's Division of Public Works. Washington County is the subgrantee for the Federal Transit Administration (FTA) transit funds by the Maryland Transit Administration (MTA).

Establisher in 1972, *County Commuter*, provides a broad

array of transit services which includes ADA Paratransit service and the SSTAP Ride Assist Voucher program.

In addition *County Commuter* also operates a subscription transportation service for the Washington County Department of Social Service (WCDSS) known as the JOBS Shuttle as well as the Hopewell Express in partnership with

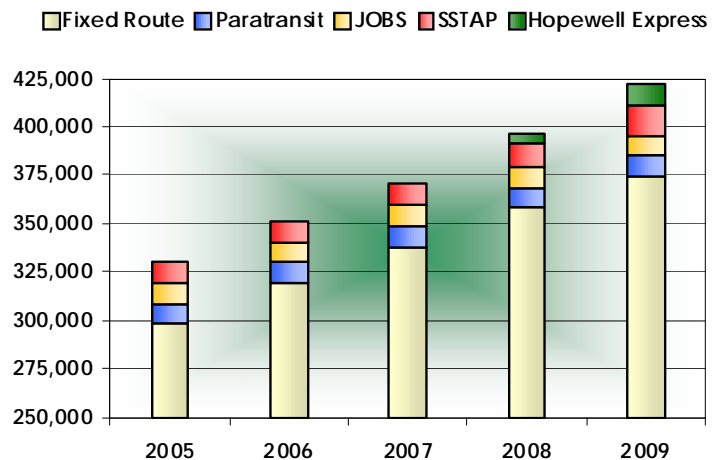
the Washington County Community Partnership (WCCP) and the Washington County Department of Social Services (WCDSS).

Located at 1000 West Washington Street Hagerstown, MD, the transit facility houses the administrative offices, transit operations, maintenance and fueling of diesel-powered vehicles.



Ridership

During Fiscal Year 2009, the *County Commuter* provided a total of 421,490 one-way passenger trips. Since Fiscal Year 2005, *County Commuter's* overall ridership has increased by 28%.



Service Programs

Fixed-Route

The *County Commuter's* public transit system operates eight fixed urban routes that originate in the City of Hagerstown and serves the surrounding communities of Chewsville, Funkstown, Smithsburg, Halfway, Long Meadow, Maugansville, Williamsport and Robinwood.

During Fiscal Year 2009, the Fixed-Route buses provided 374,280 passenger trips, an increase of 5% over the previous year.

Fixed-Route funding is awarded by the Federal Transit Administration (FTA) Section 5307 Urbanized Area Formula grant. Section 5307 provides funds for capital, operating and planning assistance of mass transportation. State and local matches are also provided.

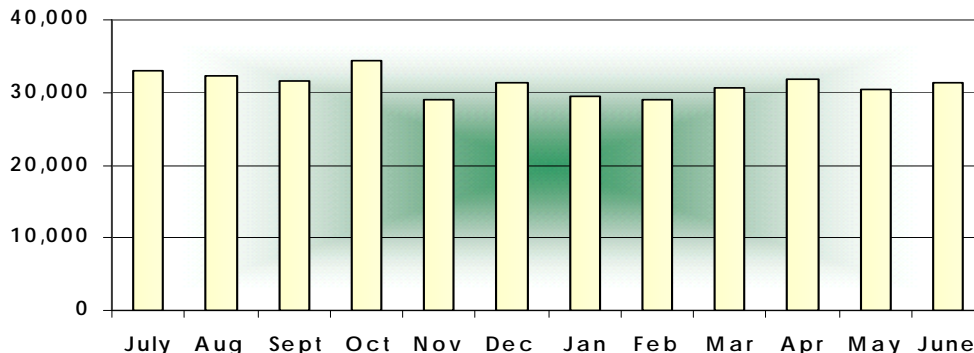
ADA Paratransit

ADA Paratransit provides specialized curb to curb transportation for eligible persons with disabilities who can not access the regular fixed-route transit buses. During FY '09 the Paratransit program provided 11,291 passenger trips, an increase of 16% over the previous year.

Funding for the ADA Paratransit program is provided by the State of Maryland and includes a match of local funds.

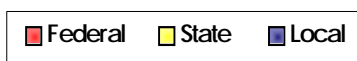
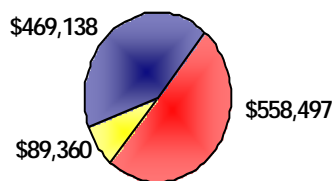
Individuals who are interested in Paratransit must complete an application and have it certified by a health care professional.

FY '09 Fixed Route Ridership



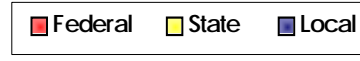
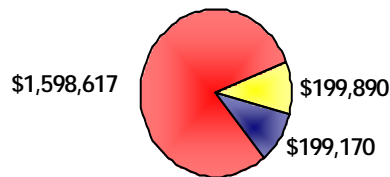
FY '09 Fixed Route Operating Revenue

\$ 1,116,995

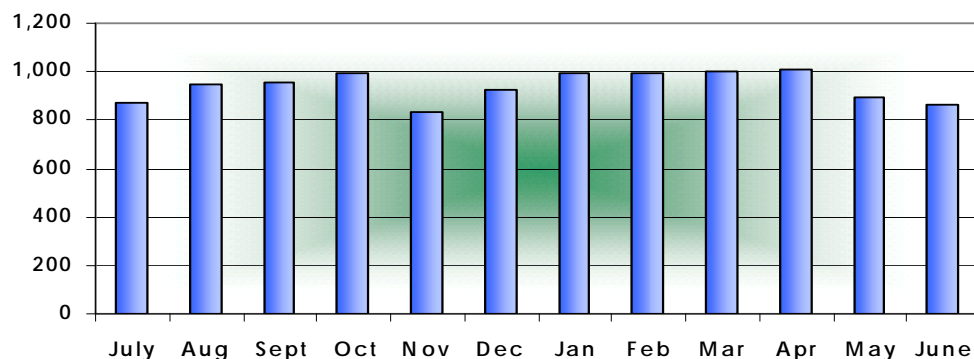


FY '09 Fixed Route Capital Funding

\$ 1,997,677

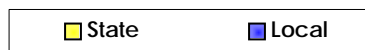
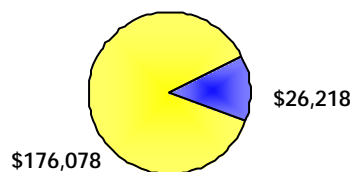


FY '09 ADA Paratransit Ridership



FY '09 ADA Paratransit Operating Revenue

\$ 202,296



Service Programs

Ride Assist

Ride Assist was developed to provide general purpose transportation for seniors and persons with disabilities. The program utilizes outside contractors to provide transportation for eligible individuals. Ride Assist passenger trips for FY 2009 topped 15,547, an increase of 24% over the previous year. Funding for Ride Assist is provided by the State of Maryland.

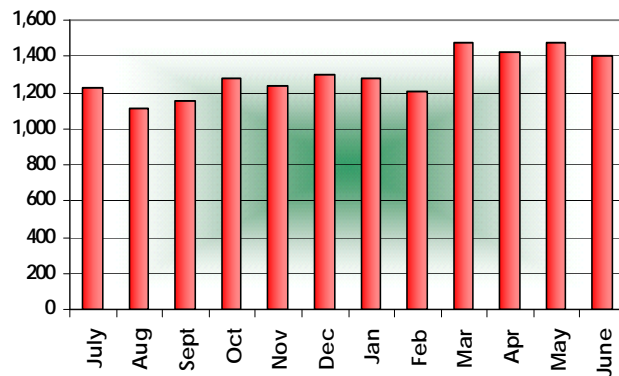
JOBS

JOBS is an employment based transportation program that is operated in cooperation with the Washington County Department of Social Services (WCDSS). Transportation is provided to and from work as well as daycare facilities. In FY 2009 the JOBS shuttle provided 9,874 passenger trips. Funding for the JOBS program is provided by the Federal Transit Administration (FTA), the State of Maryland and WCDSS.

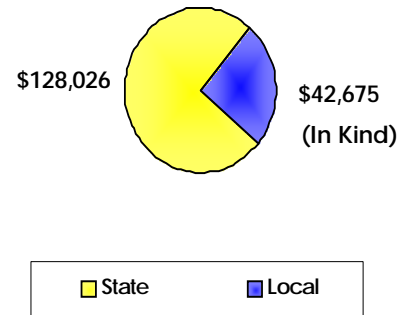
Hopewell Express

Hopewell Express is a transportation program to assist individuals who are seeking employment or who are already working at distribution centers located in the Hunters Green Business Park also known as the Hopewell Road area. In FY '09 the Hopewell Express provided 10,498 passenger trips. Funding for the Hopewell Express is provided by the Washington County Community Partnership (WCCP) and Washington County Department of Social Services (WCDSS).

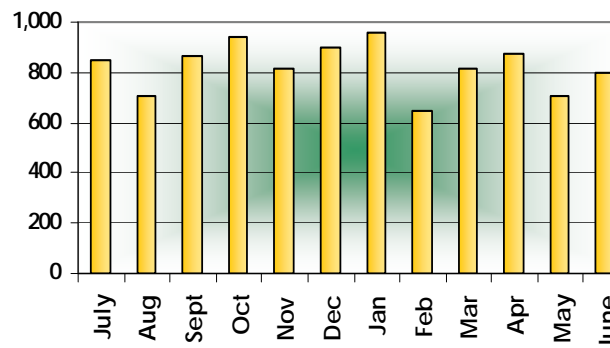
FY '09 Ride Assist Ridership



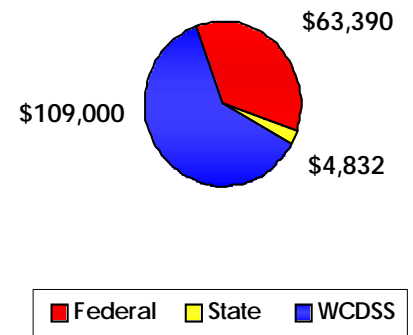
FY '09 Ride-Assist Operating Revenue
\$ 170,701



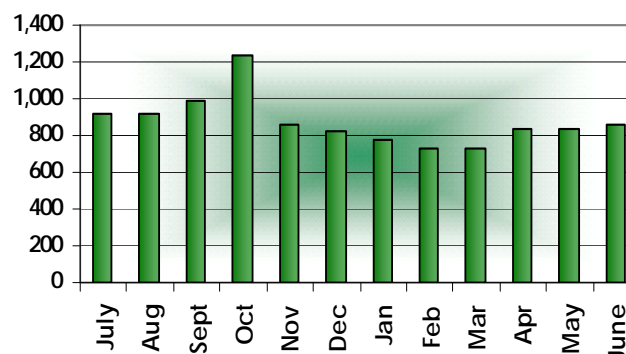
FY '09 JOBS Ridership



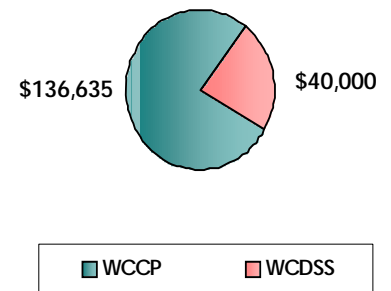
FY '09 JOBS Operating Revenue
\$ 177,222



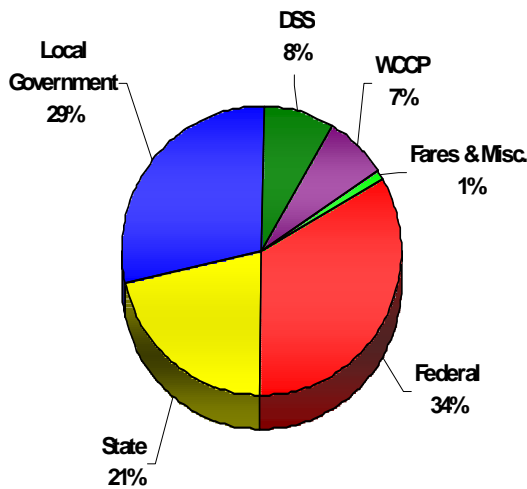
FY '09 Hopewell Express Ridership



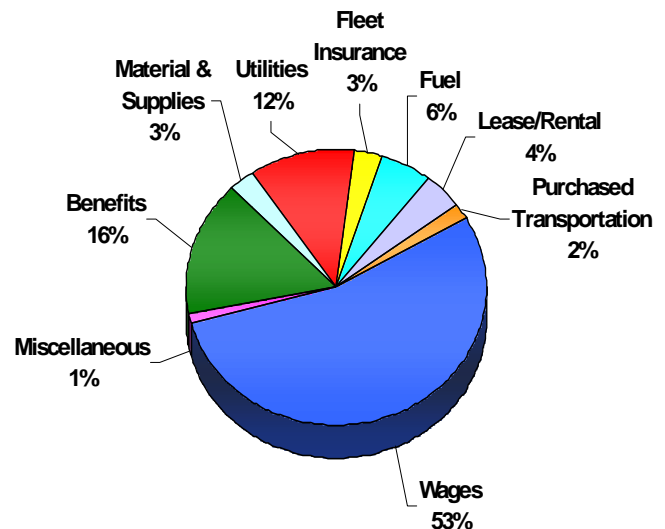
FY '09 Hopewell Express Operating Revenue
\$ 176,635



FY09 Transit Department Revenue Summary



FY09 Transit Department Expense Summary



Fiscal Facts 2009

- 37th Year of Operation
- 307 Days of Service Annually
 - ~ 255 Weekdays
 - ~ 52 Saturdays
- 566,317 Annual service miles
- 37,402 Annual service hours
- 102,705 Gallons of Diesel Fuel
- \$ 218,196 Cost of Diesel Fuel
- 55 Dedicated Employees
 - ~ 18 Full-Time
 - ~ 37 Part-Time
- 23 Vehicle Fleet
 - ~ 12 Lift-Equipped Buses
 - ~ 3 Mid-Size Lift-Equipped Buses
 - ~ 8 Small Lift-Equipped Buses
- 421,490 Passenger Trips (Ridership)
 - ~ Fixed-Route – 374,280
 - ~ ADA Paratransit – 11,291
 - ~ SSTAP Ride Assist – 15,547
 - ~ JOBS – 9,874
 - ~ Hopewell Express – 10,498

Washington County Transit

County Commuter – A Division of Public Works

1000 West Washington Street

Hagerstown, Maryland 21740-5212

Telephone: 240-313-2750 • Fax: 301-791-3343

Website: Washco-md.net

Email: transit@washco-md.net